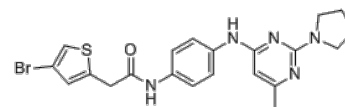


Product Name : CHD1Li 6.11
Cat. No. : PC-72745
CAS No. : 2716890-91-2
Molecular Formula : C₂₁H₂₂BrN₅OS
Molecular Weight : 472.405
Target : Other Targets
Solubility : 10 mM in DMSO



Biological Activity

CHD1Li 6.11 is a first in class, orally bioavailable oncogenic **CHD1L** inhibitor with 3.3 μ M (CHD1L-cat enzyme activity). CHD1Li 6.11 exhibits cytotoxicity with IC₅₀ of 2.59 μ M in SW620 parental tumor organoid. CHD1Li 6.11 significantly reduced the tumor volume of CRC xenografts generated from isolated quasi mesenchymal cells (M-phenotype). Chromodomain helicase DNA-binding protein 1 like (CHD1L) is an oncogene implicated in tumor progression, multidrug resistance, and metastasis in many types of cancer.

References

Brett J Prigaro, et al. *J Med Chem.* 2022 Mar 10;65(5):3943-3961.

Caution: Product has not been fully validated for medical applications. Lab Use Only!

E-mail: tech@probechem.com